

Cycling Adventures

"The adventures of the brave, cycling in the urban jungle of Copenhagen"

A short instructional video made by yours truly,

*Jonas Bielskis
Nina Popovici
Lea Rozsa
Darina Toneva*



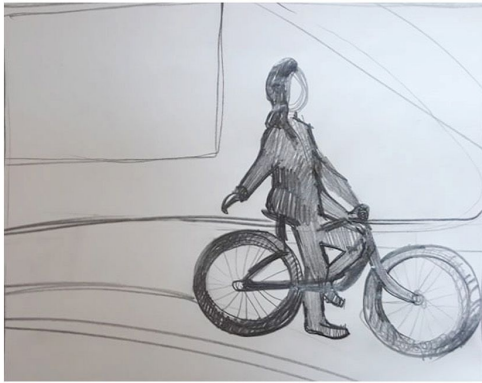
About our project

We are a group of international students, and we created an instructional video project called "Cycling in Copenhagen".

. The theme is cycling and the different situations you are likely to get yourself in, whilst riding a bike as a means of urban transportation.

Starting point: Nyhavn. We choose this location for filming because it's a turistic area, with lots of people and things to see for a person that doesn't know the city very well. Our video project is a sort of guide for cycling in Copenhagen, covering the circulation rules here and also some of the things one should not do, while using a bike around the capital.

Scene No. **1** Shot No. _____



Lea is biking, turning right shot no.1

Duration: 7 sec

Angle: eye level

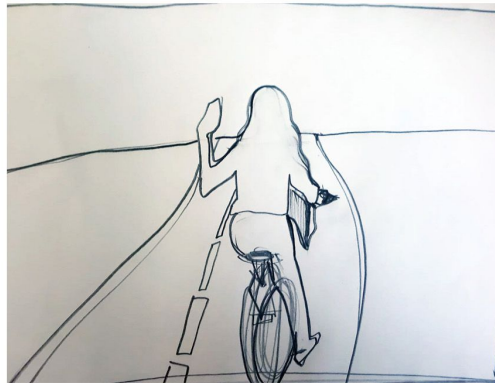
Audio: jazzy song

Shot size: medium

Camera moving left to right

No props

Scene No. **2** Shot No. _____



Lea is stopping

Duration: 6 sec

Angle: eye level

Audio: jazzy song

Shot size: medium

Camera mov. Steady

No props

Scene No. **3** Shot No. _____



Lea is turning left shot no.2

Duration: 7 sec

Angle: eye level

Audio: jazzy song

Shot size: medium

Camera mov.staedy

No props

Scene No. **4** Shot No. _____



Lea with a tourist shot no.2 (from the front side)

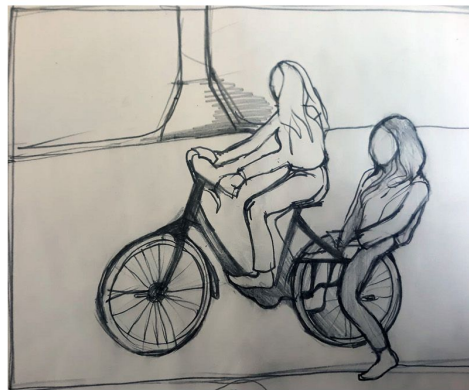
Duration: 7 sec

Angle: eye level

Audio:

Shot size: medium

Scene No. **5** Shot No. _____



Lea and Nina are on one bike

Duration: 7 sec

Angle: eye level

Audio: dangerous song

Shot size: medium

Camera mov. Steady

Scene No. **6** Shot No. _____



Nina is biking on the pedestrian road

Duration: 4 sec

Angle: low


Audio: jazzy song

Shot size: medium

Camera mov. Steady

No props

Prototype



Rules

Cycling in Copenhagen



The bike on the metro, train and harbour bus
Harbour waterbus

You can bring your bicycle on all waterbuses. You can see where the waterbuses dock on the map. Remember to buy a ticket for your bicycle.

Metro

You can bring your bicycle on the Metro at all hours except during the morning and afternoon rush hours from 7:00-9:00 am and 15:30-17:30. Remember to buy a ticket for your bicycle.

S-train

You can bring your bicycle on the all S-trains at all hours free of charge. However, you may neither enter nor exit the train with a bicycle at Nørreport Station during rush hours from 7:00-8:30 am and 15:30-17:00.

National rail

You may bring your bicycle on most national and regional trains, including InterCity and InterCityLyn trains, at all hours. You must purchase a ticket for your bicycle. When travelling with intercity trains you may also be required to make a seat reservation for your bicycle.

- #1 Keep right at all times**
- #2 Raise your hand up high before you stop**
- #3 Give hand signals to the left or right before turning**
- #4 Watch over your left shoulder before overtaking cyclists**
- #5 Always overtake other cyclists on the left**
- #6 Do not ride against the traffic flow or on sidewalks/pavements, pedestrian crossings or pedestrian streets**
- #7 Cycling is not allowed in parks in central Copenhagen**
- #8 To turn left at an intersection you must first cross to the opposite right corner of the intersection where you stop and wait for the traffic light to change before continuing**
- #9 A short ring on the bell is often a signal that a cyclist wants to pass – so please keep to the right**
- #10 From dusk to dawn, bicycles must be equipped with bicycle lights front and rear**

Copenhagen bike share

The bicycles feature optional electric assistance and a tablet with a navigation system. The bicycles are located at charging stations around the city, and the bike share website guides you to available bicycles. The price is DKK 25 per hour or DKK 70 in monthly subscription. You can read more about the bike share program and where to find the charging stations at the webpage: www.by-cyklen.dk/en/find-a-bycykel

More information

You can read more on how to get a bicycle, guided tours and traffic rules at: www.visitcopenhagen.com/copenhagen/bike-city-copenhagen

Inner City Local Committee
CITY OF COPENHAGEN
www.kk.dk

[Main Menu](#)



I Bike CPH

Watch Video Rules Gallery



During the first half of the century, the bicycle became more and more popular in Denmark. In the 1920s and 1930s, bicycles and trams dominated the streets in the larger cities, and they developed accordingly. All urban functions were located within dense structures, keeping transport distances to a minimum. At the same time, bicycles became enormously popular as a means of transport for Sunday outings and holidays.

During the German occupation of Denmark from 1940 to 1945, a shortage of supply and fuel rationings meant that the bicycle became the dominant means of transport. It continued to be so until the mid 1950s when car traffic began to grow rapidly. The growth of car traffic coincided with significant decrease in bicycling traffic until the mid 1970s. But even when bicycle traffic was at its lowest ebb, one third of the adult population were using bicycles regularly.

The energy crisis of the 1970s and growing environmental awareness led to traffic switching from cars to bicycles and public transport and to an increasing demand for improved conditions for cyclists. An example of this was the annual cyclist demonstrations in the major cities from the late 1970s. Authorities and planners became aware of the problems which cyclist faced, and bicycle traffic began to form a greater part of traffic planning.

From 1982 to 2001, every budget contained funds allocated to the construction of cycle paths and improvements of conditions for cyclists. The focus on bicyclists and the funding were minimised after 2001 at the national level. This has now changed, however. Reducing CO2 emissions and improving health conditions have once again placed cycling on the political agenda. **Copenhagen won the title as the world's most bicycle-friendly city in 2015.** We have created this video to show the life with bikes to the people that are new to Denmark or just studying here.



[Main Menu](#)



Cycling Adventures

A photo gallery



Here we have some pictures showing the chosen location and the process of our work, filming, planning, and collaborating on this interesting project.

[Main Menu](#)

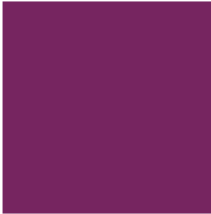
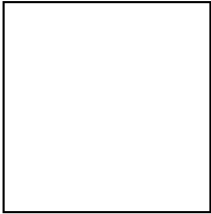
<https://xd.adobe.com/view/b77a57a9-412f-4a59-70df-46b03df54954-c14b/>



Guide
Adventure
Rules **Exciting**



Moodboard



Logo:

Style tile version: 01



I bike Cph

Possible colors:



Typography

Example of a title

Font: KBH Black, font size h1

Example of a subtitle

Font: KBH, font size h3

Example of body text

Lorem ipsum dolor sit amet, consectetur adipiscing elit, sed do eiusmod tempor incididunt ut labore et dolore magna aliqua. Quis ipsum suspendisse ultrices gravida. Risus commodo viverra maecenas accumsan lacus vel facilisis.

Font: KBH Regular, font size 1em

Menu example:



Icons and other vector elements:



Image assets:



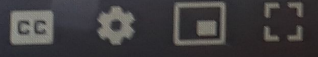
Target Group

The target group that we've chosen are young adult tourists or expats who live in Denmark, so we decided to make the design of our website fresh, clean and easy to navigate. Our main purpose was to make it's usage pleasant and intuitive so the users can be able to find the most important information very quickly. We know that young people are always in a hurry and they prefer to watch a video instead of reading long and boring texts with rules and explanations. So we tried to make everything short, clean, simple with a bit of humour.

Open with Anyfile Notepad



0:04 / 0:13



0028 MTS

Jonas Bielke

YouTube channel name

Important decisions: *Because this is a website for young people, so we have decided to make the website reliable, easily accesable, to put funny, interesting parts in it, which will keep their attention and will not be boring.*

Main purpose of the video: *We wanted to show, introduce the biking life to people who do not know anything about the rules, what one should do and should not do.*

Dramaturgical elements

Light elemets: *Filmed on a light cloudy day, the colours are neutral in shades of blue and grey, making us feel the mood of the day. Actors are wearing dark coloured clothing, so that we can easily distinguish them from the rest of the crowd. Dark colours attract light, so we tought it would be a good choice.*

Space elements: *The location is outdoors, at Nyhavn bridge. The shapes are angular, soft, simple. We are creating a feeling of wide open spaces, with crowded streets. The sky is vivid and mesmerising, making us experience a feeling of freedom.*

Framing: *Long shot, medium shot, close up . We have low angles and interaction.*

Sound effects: *Voice narration + Ambient Background Music*

Camera movement: *slow paced, medium paced, handheld.*

Movement outside of the camera: *fast, more/less, horizontal, dynamic.*

The story: *Jumps in time, natural speed*

Historical elements: *The story takes place in an afternoon, in a historic part of town.*

Duration: *1 min.*

YouTube Link:

<https://www.youtube.com/watch?v=wFhssmiUmL4&feature=youtu.be&fbclid=IwAR3U0opJ7HniXU7l9t1xHrFZctOsvCLpGvGQ8MhMz2ZAyOp2sdmVa4kdn-c>